



ZF

# Mounting Elements

with appropriate accessories  
for mounting of clamping tools on machine tools



ZFE



RF



RH

<b>Flange Adapters ZF</b>	<b>94</b>
<b>Flange Adapters ZFE (adjustable)</b>	<b>96</b>
<b>Reducing Adapters RF</b>	<b>98</b>
<b>Reducing Sleeves RH</b>	<b>100</b>

## Flange Adapters ZF

according to DIN ISO 702-1 (DIN 55028)  
for mounting of face drivers type FSB / FSP / FDNC

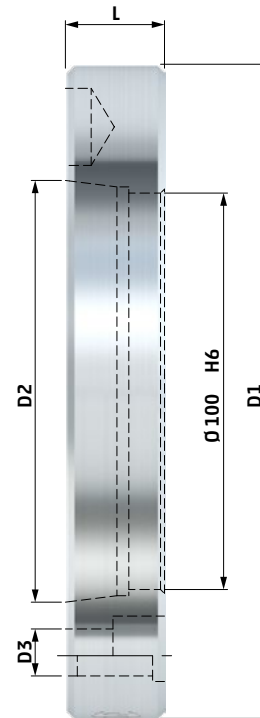
The flange adapter is used for direct mounting of **face driver type with movable center pin** on machine tool spindle noses DIN ISO 702-1 (DIN 55026).

Our flange adapters are made of non-hardened steel. This helps to protect the spindle nose and serves for a better damping property.

### Type ZF with short taper



### Technical data- type ZF with short taper



type ZF	spindle size	D1	D2	D3 für	L	for face drivers FSB	cat. no.
5	5	160	82.563	M10	25	01 - 5	<b>742 02</b>
6	6	165	106.375	M12	25	01 - 5	<b>742 04</b>
8	8	220	139.719	M16	60	01 - 55	<b>742 062</b>
11	11	280	196.869	M20	60	01 - 6	<b>742 082</b>

- Adapters are supplied with mounting screws to suit the machine tool spindle nose.
- Other sizes and special adapters are available upon request.
- Hardened flange adapters are available upon request.

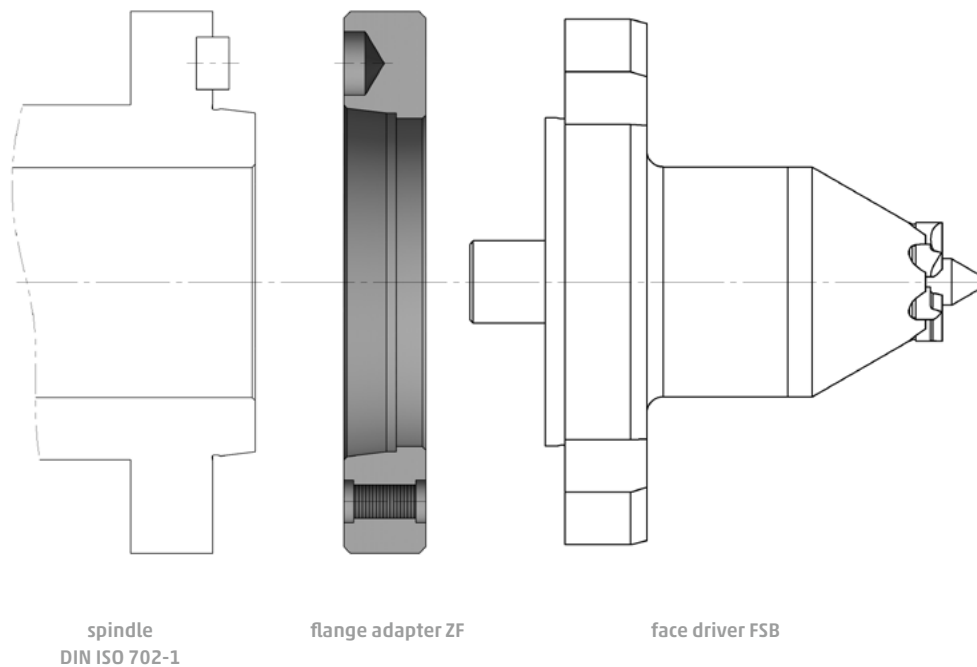
## Clamping principle

Face drivers with movable center pin and all other face drivers with retainer  $\varnothing 100$  are mounted onto the machine tool spindle via flange adapter ZF.

Because of the exactly fitting of the mounting diameter  $\varnothing 100$  it is possible to adapt the face driver without adjusting the run out.

For increased run out requirements the face driver should be adjusted in the flange adapter.

### Type ZF with short taper



## Flange Adapters ZFE (adjustable)

according to DIN ISO 702-1 (DIN 55028)  
for mounting face drivers type FFB / FFBH  
und reducing sleeves type RF

The flange adapter is used for direct mounting of **face driver type FFB and FFBH** with adjustment true. Adaption on machine tool spindle noses DIN ISO 702-1 (DIN 55026).

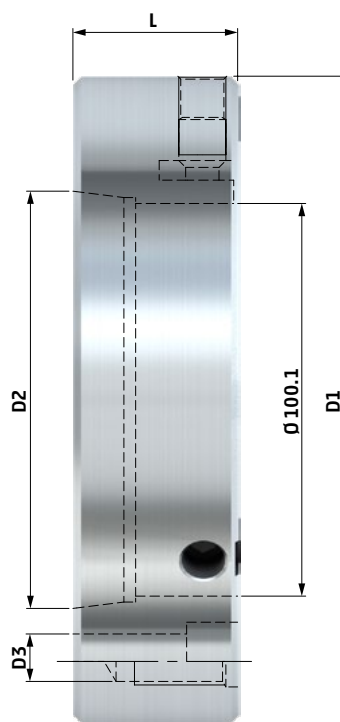
Our flange adapters are made of non-hardened steel. This helps to protect the spindle nose and serves for a better damping property.

### Type ZFE with short taper

for adjustment at high run out requirements



### Technical data – type ZFE with short taper



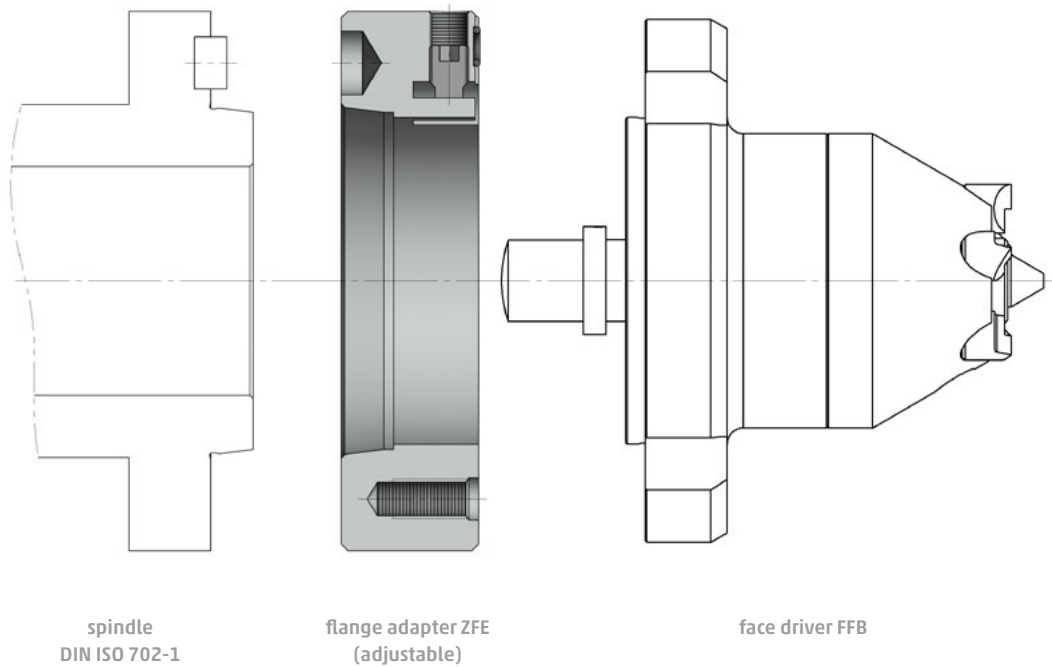
type ZFE	spindle size	D1	D2	D3 für	L	for face drivers FFB / FFBH	cat. no.
5	5	160	82.563	M10	40	01 - 5	<b>742 12</b>
6	6	165	106.375	M12	42	01 - 5	<b>742 14</b>
8	8	220	139.719	M16	42	01 - 55	<b>742 16</b>
11	11	280	196.869	M20	60	01 - 6	<b>742 18</b>

- Adapters are supplied with mounting screws to suit the machine tool spindle nose.
- Other sizes and special adapters are available upon request.
- Hardened flange adapters are available upon request.

## Clamping principle

Face drivers of the type FFB / FFBH and all other face drivers with retainer  $\text{D}100$  which need a very precise run out adjustment are mounted onto the machine tool spindle via flange adapter ZFE.

### Type ZFE with short taper



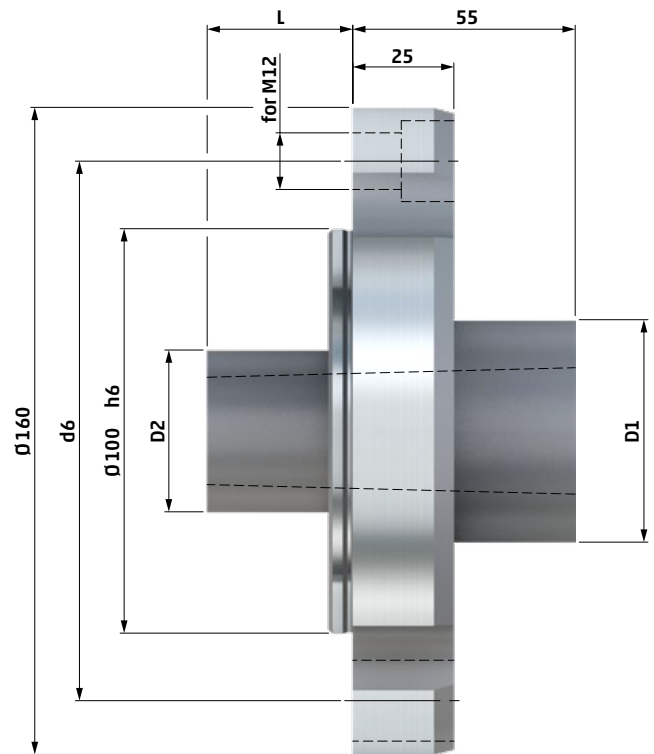
## Reducing Adapters RF

### for mounting clamping tools with morse taper shank

The reducing adapter is used for direct mounting of **face driver type SB**, **pipe driver type NDG** or of **various center pins with morse taper shank**.

#### Type RF with morse taper

#### Technical data – type RF with morse taper



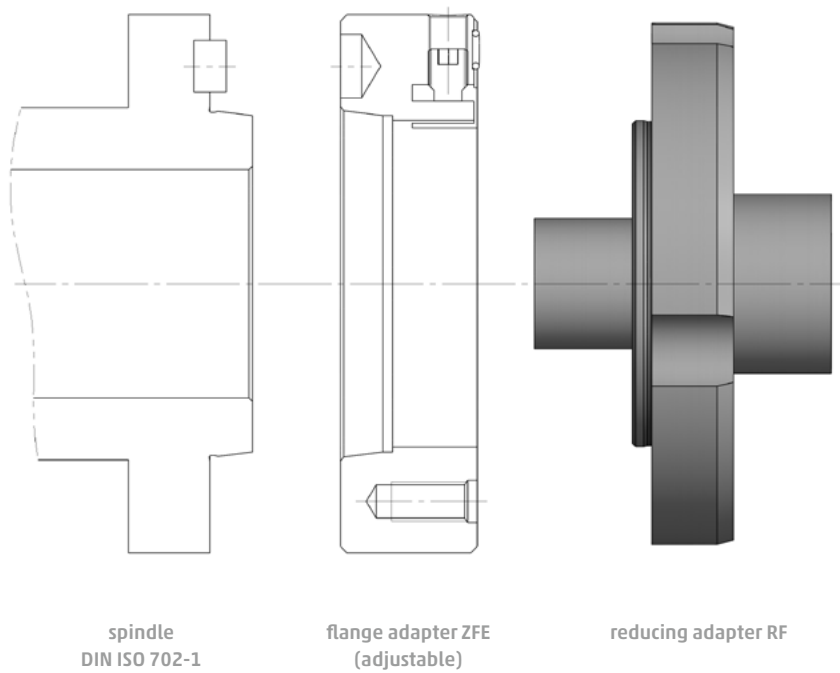
type	MK	D1	D2	L	d6	cat. no.
RF						
<b>3</b>	<b>3</b>	42	36	15	133.4	<b>743 01</b>
<b>4</b>	<b>4</b>	55	40	36	133.4	<b>743 02</b>
<b>5</b>	<b>5</b>	68	55	63	133.4	<b>743 03</b>
<b>6</b>	<b>6</b>	90	80	75	133.4	<b>743 04</b>

- Adapters are supplied with mounting screws to suit the machine tool spindle nose.
- Other sizes and special adapters are available upon request.

## Clamping principle

For mounting a clamping tool with morse taper shank onto a machine tool spindle DIN ISO 702-1, a reducing flange RF is used by mounting it onto the machine tool spindle via flange adapter ZFE (e. g. at a double spindle CNC lathe).

### Type RF with morse taper





## Reducing Sleeves RH

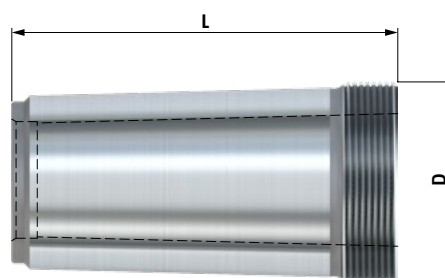
### for reducing of morse cone retainers

The reducing sleeve is used for mounting of face driver type SB, pipe driver type NDG or of various center pins with morse taper shank. Demounting by means of extraction screw thread.

#### Type RH with morse taper



#### Technical data - type RH with morse taper



type	MK	MK	D	L	cat. no.
RF	outside	inside	screw thread		
4/3	4	3	M35 x 1.5	82	932 09
5/3	5	3	M48 x 1.5	91	932 10
5/4	5	4	M48 x 1.5	91	932 11
6/3	6	3	M70 x 1.5	128	932 12
6/4	6	4	M70 x 1.5	128	932 13
6/5	6	5	M70 x 1.5	128	932 14

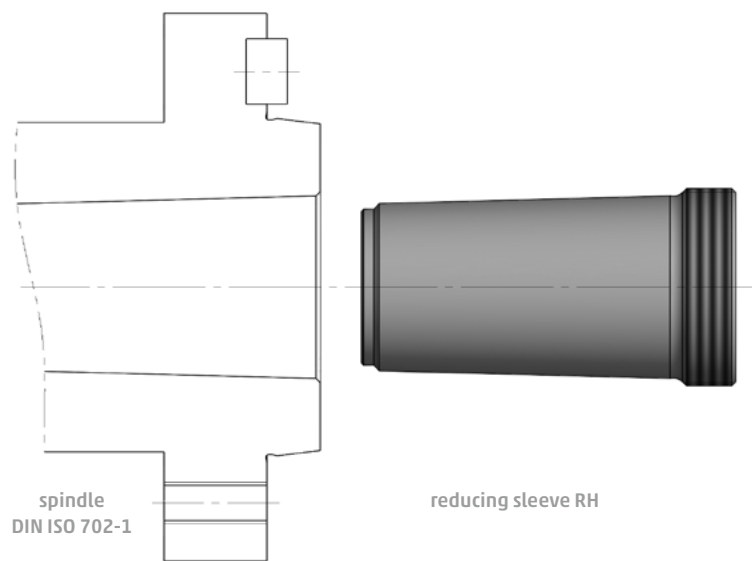
■ Other sizes and special sleeves are available upon request.

## Clamping principle

For retaining a morse cone shank which is smaller than the available tailstock quill or machine tool spindle, a reducing sleeve with matching size is adapted.

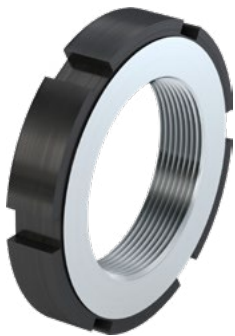
For easy removal the reducing sleeves are made with an extraction thread.

### Type RH with morse taper

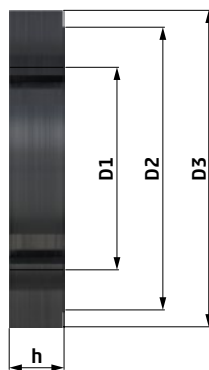


## Extracting nut DIN 1804 h - for reducing sleeve RH

### Type DIN 1804 h



### Technical data - type DIN 1804 h



D1	D2	D3	h	cat. no.
M35 x 1.5	47	55	11	<b>830 41</b>
M48 x 1.5	67	75	13	<b>830 43</b>
M70 x 1.5	90	100	14	<b>830 44</b>